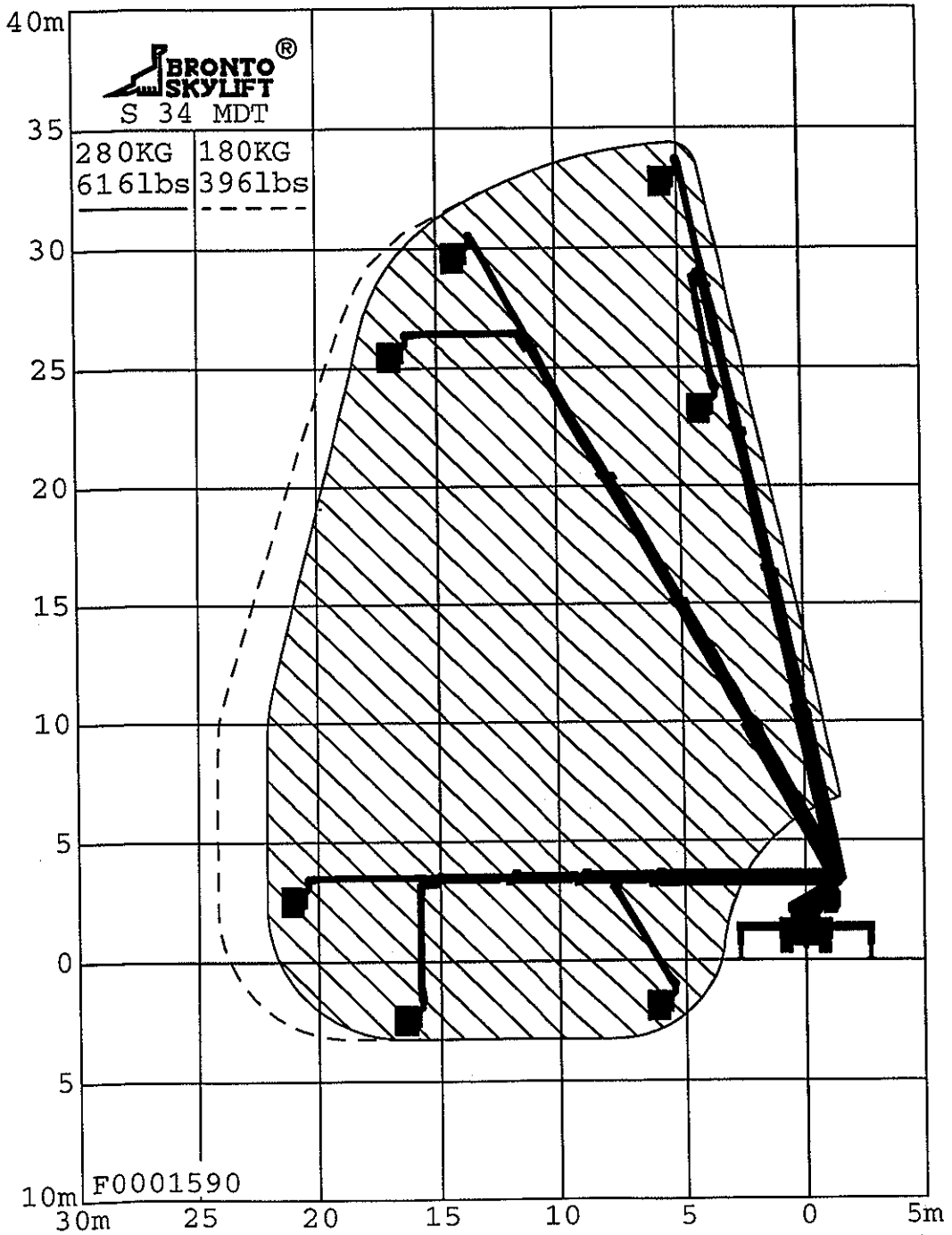


BRONTO SKYLIFT S 34 MDT

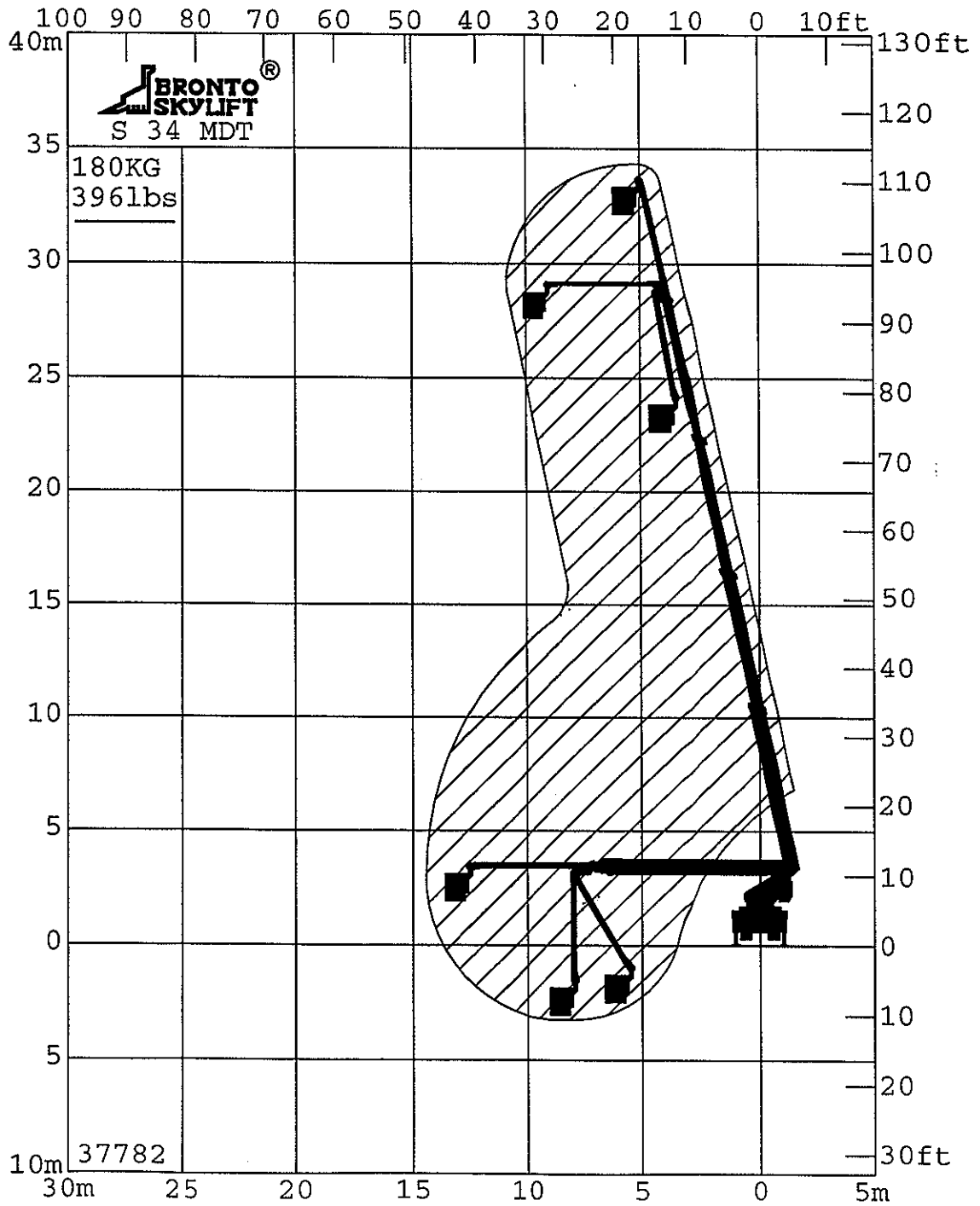
OUTREACH DIAGRAM



TURNTABLE	
COUNTERWEIGHT	2000kg
MIN. CHASSIS WEIGHT	6000kg

BRONTO SKYLIFT S 34 MDT

OUTREACH DIAGRAM (Narrow jacking)



TURNTABLE	
COUNTERWEIGHT	2500 KG
MIN. CHASSIS WEIGHT	6000 KG

BRONTO SKYLIFT S 34 MDT**TECHNICAL SPECIFICATION**

Max. working height	~34 m
Max. height to working cage bottom	32 m
Max. side outreach/cage load	22 m/280 kg (3 persons + 40 kg) 24 m/180 kg (1 person + 100 kg)
Max. side outreach/cage load at narrow jacking	14 m/180 kg (1 person + 100 kg)
Max. side force	400 N
Max. outreach below the ground level	2,5 m
Rotation	±280 deg
Dimensions of working cage	1,0x1,8x1,1 m (lxwxh)
Transport height	~3,8 m
Transport length	~9,5 m
Transport width	2,5 m
Max. outrigger width	5,6 m
Max. outrigger width at narrow jacking	2,6 m
Skylift weight without truck chassis	~10,2 ton
Total weight	~16,9 ton
Max. outrigger force	130 kN
Max. footplate pressure	6,1 kg/cm ²
Max. footplate pressure with plywood groundplate (50x650x750)	2,5 kg/cm ²
Operating temperature range	-25°C... +40°C
Noise level	<85 dB
Max. wind speed	12,5 m/s