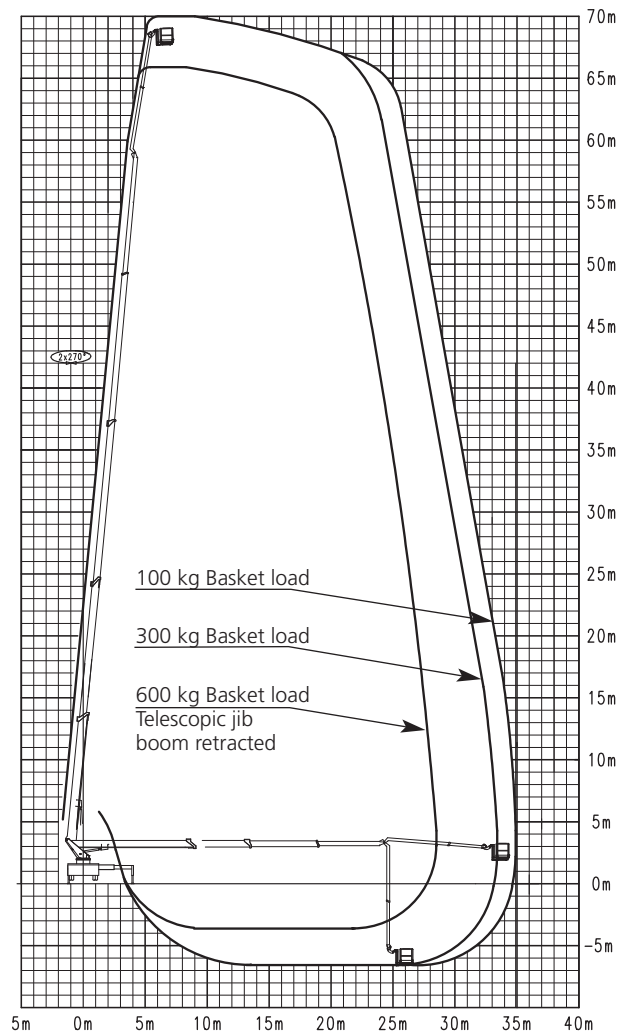
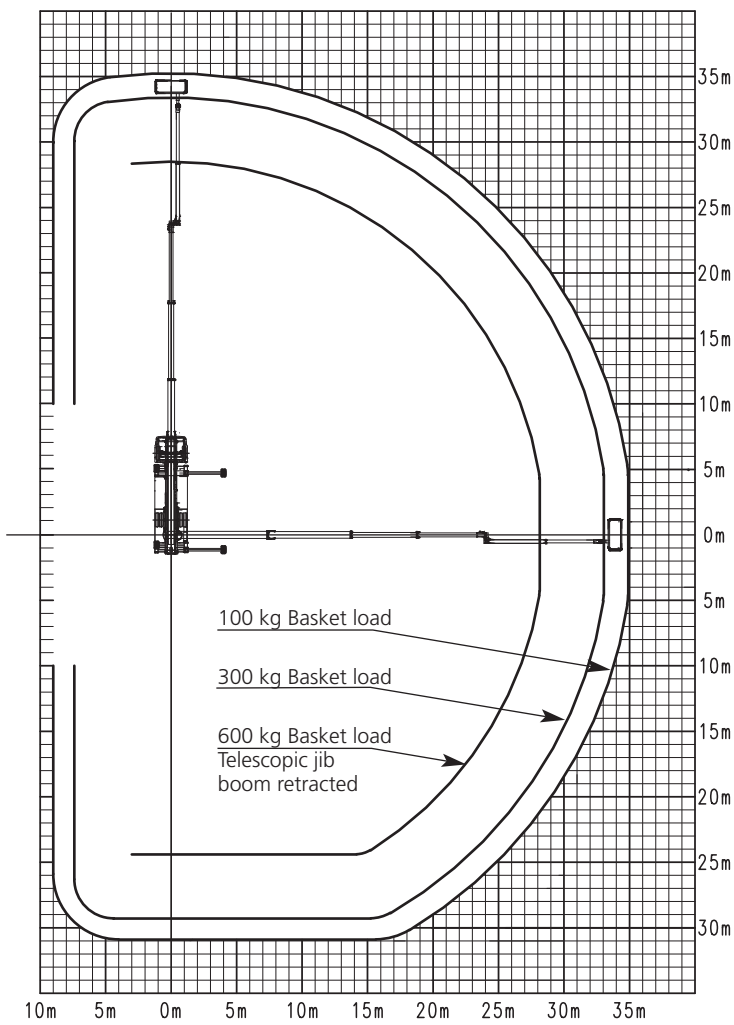


# WT 700

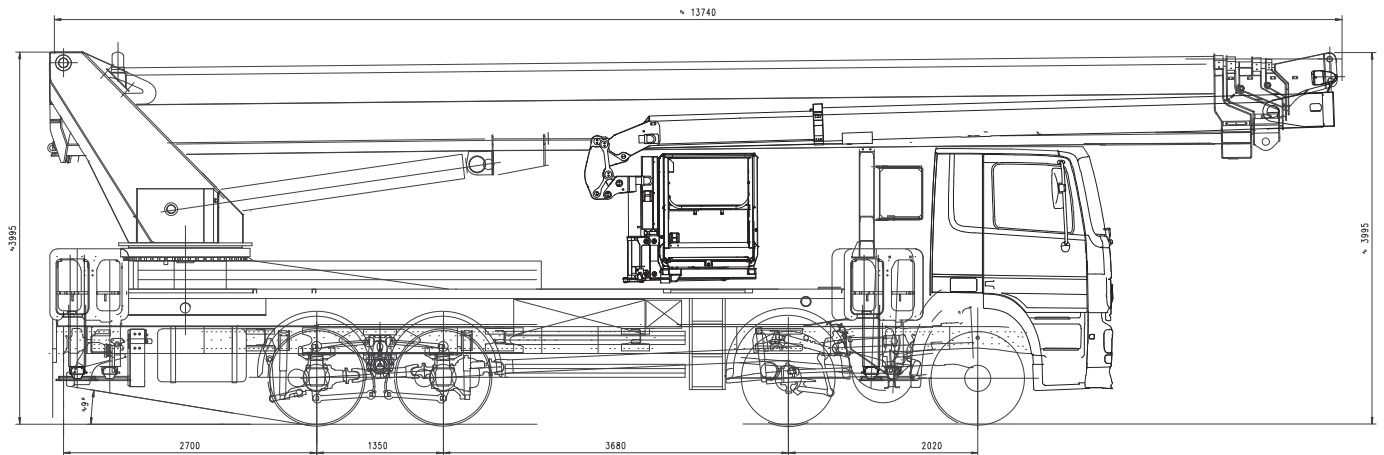


## WT 700 Working range



# For Great Working Heights

## Technical Data WT 700



### Specifications of basic model

|   |                 |
|---|-----------------|
| Max. working height   | 70 m            |
| Max. basket floor height  | 68 m            |
| Max. horizontal outreach of telescopic workman basket (with ... kg basket load) | 35.0 m / 100 kg |
| Max. horizontal reach Heavy-duty workman basket (with ... kg basket load)       | 35.7 m / 100 kg |

### Workman basket

|   |                      |
|---|----------------------|
| Standard basket:                                    | 3.88 x 1.05 x 1.10 m |
| Telescopic basket (WxLxH)                           |                      |
| Optional basket:                                    | 2.47 x 1.05 x 1.10 m |
| Heavy-duty basket (WxLxH)                           |                      |
| Outreach with straight position of basket           | 30 m / 100 kg        |
| Slewing range of basket                             | 2 x 80°              |
| Max. permissible load with fully extended jib boom  |                      |
| Telescopic basket                                   | 300 kg               |
| Heavy-duty basket                                   | 400 kg               |
| Max. permissible load when jib boom is not extended |                      |
| Telescopic basket                                   | 600 kg               |
| Heavy-duty basket                                   | 700 kg               |
| Motor Start/Stop in the workman basket              | standard             |
| Synthetic cover on control panel                    | standard             |
| 230 V CEE outlet in the workman basket              | standard             |
| 4 anchor points to secure safety belt               | standard             |
| Displaceable control panel                          | standard             |
| Graphic display                                     | standard             |
| Reversible slewing direction after panel relocation | standard             |
| Collision protection for basket and jib boom        | standard             |
| Battery voltage monitoring in the basket            | standard             |

### Stabilizers

|   |                |
|---|----------------|
| Function of the stabilizers                               | fully variable |
| Max. stabilizer spread - both sides horizontally extended | 8.27 m         |
| Stabilizer control at the base                            | standard       |
| Automatic outrigger system and set-up levelling           | standard       |
| Max. permissible inclination 2°                           |                |
| Blinking lights on the stabilizer extensions              | standard       |
| 4 Safety plates   | standard       |

### Boom system

|  |             |
|--|-------------|
| Number of extensions (main boom)   | 4           |
| Jib boom   | 1 extension |
| Max. length of jib boom  | 9.65 m      |
| Working range with jib boom below floor level  | up to 6 m   |
| All power guides and hydraulic and mechanical equipment internally routed and optimally protected against damage | standard    |
| Hydraulic jib boom, working range  | 175°        |
| Automatic return of main boom to transport position "Home Function"  | standard    |

### Slewing system

|                             |          |
|-----------------------------|----------|
| Slewing within mirror width | standard |
| Slewing range               | 540°     |

### Carrier vehicle and installation

|  |              |
|--|--------------|
| GVW class                                  | 33 t         |
| Length in transport position               | 13.75 m*     |
| Width in transport position                | 2.50 m*      |
| Height in transport position               | 3.98 m*      |
| Angle of slope                             | approx. 9° * |
| Hydraulic oil tank with return line filter | standard     |

\*) depending on carrier vehicle

### Manual and emergency controls

|  |          |
|--|----------|
| Integrated in the body - well-protected and lockable | standard |
| Emergency lowering system in the basket              | standard |
| Back-up/Emergency control at the base                | standard |
| 24 V electric emergency pump over vehicle battery    | standard |