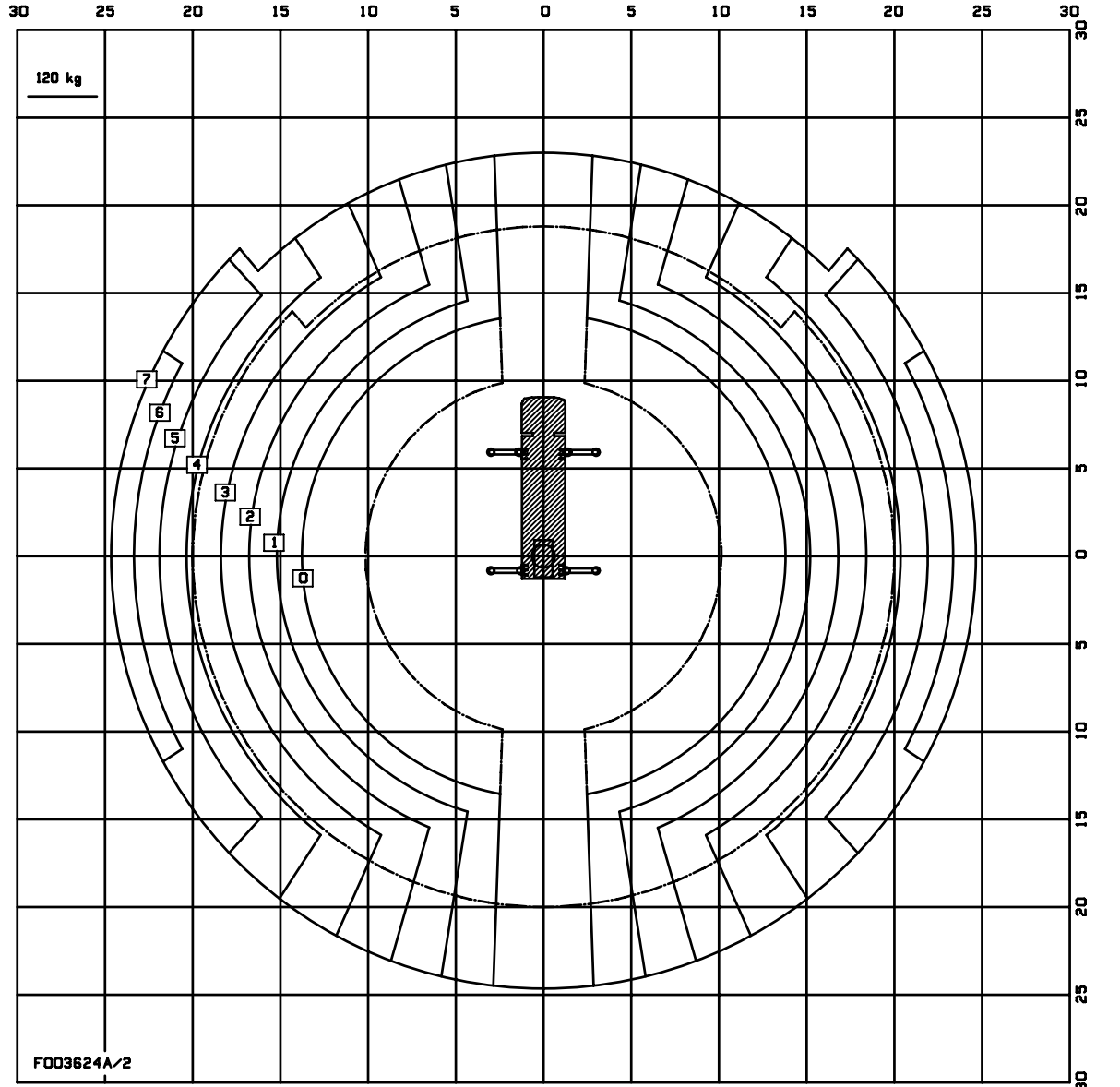
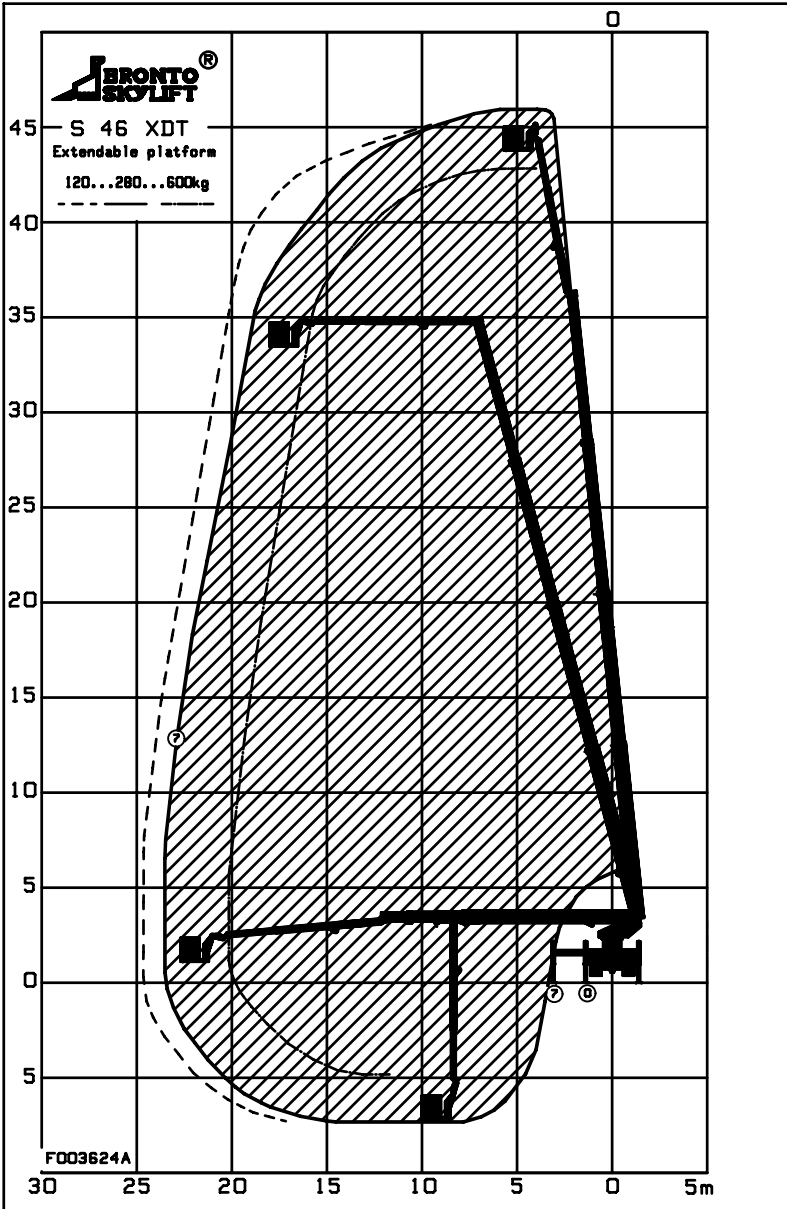


NOTE 1 PRELIMINARY
 NOTE 2 LEVITETTÄVÄ TYÖKORI
 REMARKS GVH 18 ton



TECHNICAL DATA

Safe working load max.	: 600 kg
Max. permitted wind speed	: 12.5 m/s
Typical GVH	: 18.0 ton
operating weight min.	: 17.5 ton
Outrigger width and lenght c/c	
- normal jacking	: 6.2/6.1 m
- narrow jacking	: 2.8/6.1 m
- one side jacking	: 4.5/6.1 m
Calculation code	:

1 200 BRONTO SKYLIFT S 46 XDT

(A3) OUTREACH DIAGRAM

0 SAFE WORKING LOAD MAX. 600 KG

BRONTO SKYLIFT

LAYER DMG NUMBER REV

BRONTO SKYLIFT OF AB FINLAND

2005-03-22

B3+

F003624A

BRONTOCAD

HANDLING ON CAD SYSTEM ONLY