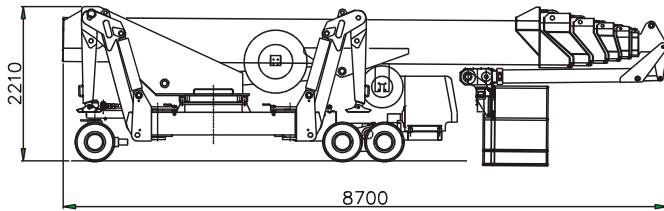


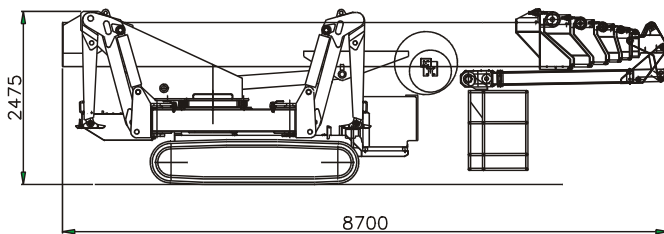
MOTORE DIESEL	DIESEL ENGINE	DIESELMOTOR	MOTEUR DIESEL	32 kW
MOTORI ELETTRICI	ELECTRIC MOTORS	ELEKTROMOTOR	MOTEUR ELECTRIQUES	380V-10 kW
PENDENZA MAX	MAX SLOPE	MAX STEIGFAHIGKEIT	PENTE MAXI	35%
VELOCITA' MAX	MAX SPEED	MAX GESCHWINDIGKEIT	VITESSE MAXI	2 KM/H APPROX.
ROTAZIONE TORRETTA	TURNTABLE SLEWING	DREHTURM ROTATION	ROTATION TOURELLE	360° CONT.
NAVICELLA AEREA	AERIAL CAGE	ARBEITSKORB	NACELLE	2.2/2.4 x 0.9 M.
ROTAZIONE NAVICELLA	CAGE ROTATION	KORB ROTATION	ORIENTATION NACELLE	75° + 75°
PORTATA UTILE	SAFE WORK. LOAD	ZULADUNG	CHARGE UTILE	200 KGS.
PESO	WEIGHT	GEWICHT	POIDS	13,200 KGS
LARGHEZZA MINIMA	MIN. STOWED WIDTH	MIN. BREITE	LARGEUR MIN.	1,90 m.

# Ragno Spider: XTJ 48

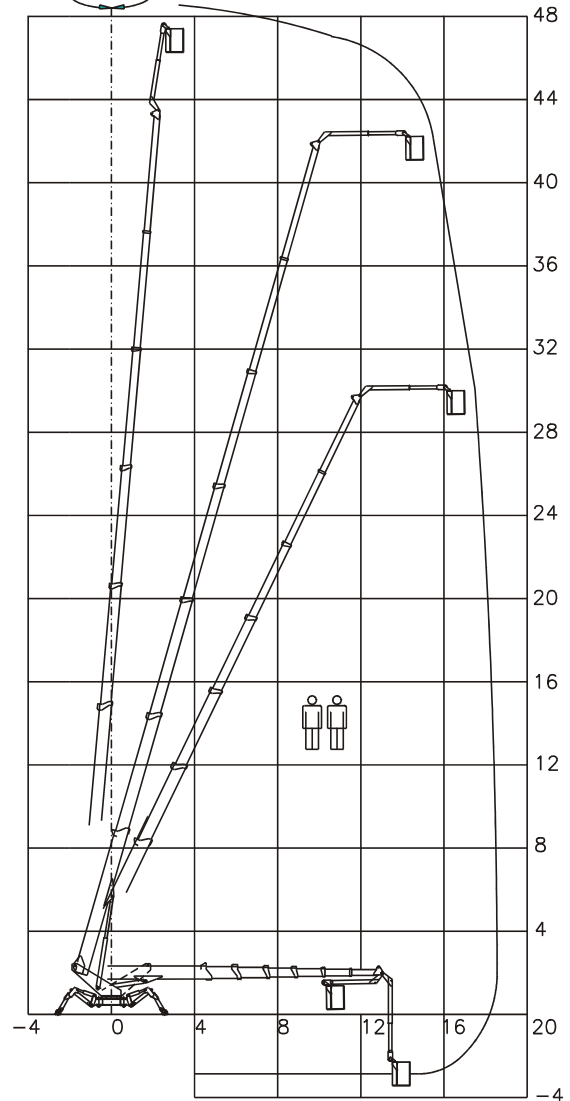
## RAGNO XTJ 48/R (WHEELED VERSION)



## RAGNO XTJ 48/C (CRAWLER VERSION)



ROTAZIONE 360° CONTINUI



RAGNO XTJ 48/R	MODEL	RAGNO XTJ 48/C
35 KW	NO-NOISE DIESEL ENGINE	35 KW
220V-2,2KW 380V-5,5KW	ELECTRIC MOTORS	220V-2,2KW 380V-5,5KW
3 AXLES WITH 6 \ 8 WHEELS	CHASSIS FRAME	ON RUBBER TRACKS VARIABLE WIDTH
6 X 4	HYDRAULIC TRANSMISSION	INDEPENDENT
2 KMH \ 25%	APPROX. MAX. SPEED \ APPROX. MAX. SLOPE	1,4 KMH \ 40%
CONTINUOUS 360°	TURNTABLE SLEWING	CONTINUOUS 360°
2.400 X 800 MM	INTERCHANGEABLE AERIAL CAGES (MAX. DIM.S)	2.400 X 800 MM
90° + 80°	CAGE ROTATION	90° + 80°
120 \ 200 KGS	SAFE WORKING LOAD	120 \ 200 KGS
95° - 125°	VARIABLE ARTICULATION OF THE OUTRIGGERS	95° - 125°
4.100 X 6.300 MMS	VARIABLE GEOMETRY STABILIZATION (MIN. DIM.S)	4.350 X 6.300 MMS
1.160 MMS WITH 6 WHEELS 1.620 MMS WITH 8 WHEELS	MIN. WIDTH (WITHOUT THE CAGE)	1.450 MMS NARROW POSITION 1.900 MMS EXTENDED POS.
11.000 KGS	WEIGHT	13.200 KGS
6.500 KGS	APPROX. MAX PRESSURE OF EACH OUTRIGGER	6.800 KGS
4,4 KGS\CM2	APPROX. THEORETIC. PRESSURE OF THE WHEELS \ TRACKS	0,66 KGS\CM2