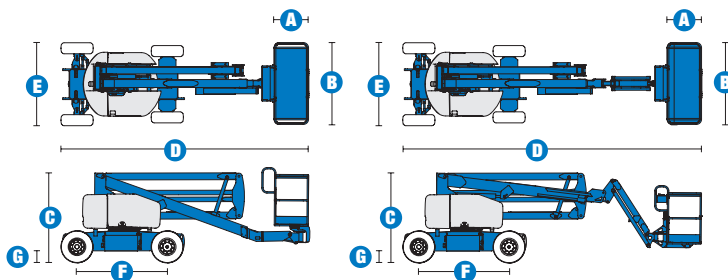


## Specifications



| MODELS                             | Z™-45/25 DC & Bi |              | Z™-45/25J DC & Bi |              |
|------------------------------------|------------------|--------------|-------------------|--------------|
| MEASUREMENTS                       | Metric           | US           | Metric            | US           |
| Working height maximum*            | 15.87 m          | 51 ft 6 in   | 15.92 m           | 51 ft 8 in   |
| Platform height maximum            | 13.87 m          | 45 ft 6 in   | 13.92 m           | 45 ft 8 in   |
| Horizontal reach maximum           | 7.62 m           | 25 ft        | 7.65 m            | 25 ft 1 in   |
| Up-and-over clearance maximum      | 7.04 m           | 23 ft 1 in   | 6.73 m            | 22 ft 1 in   |
| <b>A</b> Platform length           | 76 cm            | 2 ft 6 in    | 76 cm             | 2 ft 6 in    |
| <b>B</b> Platform width            | 1.83 m           | 6 ft         | 1.83 m            | 6 ft         |
| <b>C</b> Height - stowed           | 2 m              | 6 ft 7 in    | 2 m               | 6 ft 7 in    |
| <b>D</b> Length - stowed           | 5.56 m           | 18 ft 3 in   | 6.83 m            | 22 ft 5 ft   |
| <b>E</b> Width                     | 1.79 m           | 5 ft 10.5 in | 1.79 m            | 5 ft 10.5 in |
| <b>F</b> Wheelbase                 | 2.03 m           | 6 ft 8 in    | 2.03 m            | 6 ft 8 in    |
| <b>G</b> Ground clearance - centre | 24 cm            | 9.5 in       | 24 cm             | 9.5 in       |

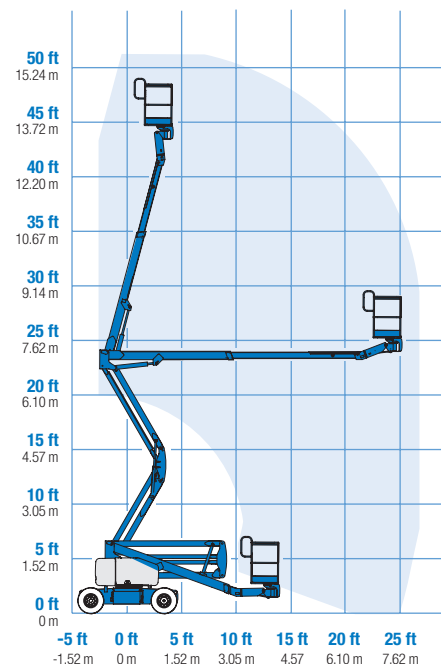
| PRODUCTIVITY             |                      |             |                      |             |
|--------------------------|----------------------|-------------|----------------------|-------------|
| Lift capacity            | 227 kg               | 500 lbs     | 227 kg               | 500 lbs     |
| Platform rotation        | 180°                 | 180°        | 160°                 | 160°        |
| Vertical jib rotation    | ---                  | ---         | 135°                 | 135°        |
| Turntable rotation       | 355° non-continuous  |             | 355° non-continuous  |             |
| Turntable tailswing      | zero                 | zero        | zero                 | zero        |
| Drive speed - stowed     | 4.8 km/h             | 3.0 mph     | 4.8 km/h             | 3.0 mph     |
| Drive speed - raised **  | 1.1 km/h             | 0.68 mph    | 1.1 km/h             | 0.68 mph    |
| Gradeability - stowed*** | 30%                  | 30%         | 30%                  | 30%         |
| Turning radius - inside  | 1.83 m               | 6 ft        | 1.83 m               | 6 ft        |
| Turning radius - outside | 4.26 m               | 14 ft       | 4.26 m               | 14 ft       |
| Controls                 | 24 V DC proportional |             | 24 V DC proportional |             |
| Tyres (foam filled)      | 23 x 37 cm           | 9 x 14.5 in | 23 x 37 cm           | 9 X 14.5 in |

| POWER                    |  |         |         |         |
|--------------------------|--|---------|---------|---------|
| Power source - DC        | 48 V DC (eight 6 V batteries, 350 Ah capacity)   |         |         |         |
| Power source - Bi-Energy | 48 V DC (eight 6 V batteries, 350 Ah capacity) with Kubota 12 hp (8.9 kW) diesel driven alternator |         |         |         |
| Auxiliary power unit     | 24 V DC  | 24 V DC | 24 V DC | 24 V DC |
| Hydraulic tank capacity  | 30.3 L   | 8 gal   | 30.3 L  | 8 gal   |
| Fuel tank capacity       | 34.1 L   | 9 gal   | 34.1 L  | 9 gal   |

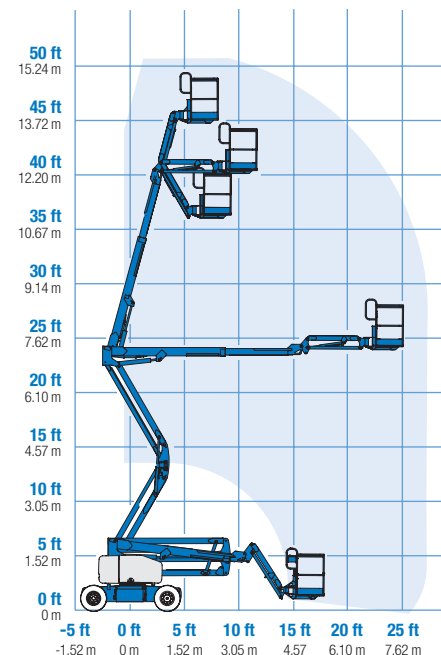
| WEIGHT**** |          |            |          |            |
|------------|----------|------------|----------|------------|
| DC         | 6,963 kg | 15,350 lbs | 7,394 kg | 16,300 lbs |
| Bi-energy  | 7,190 kg | 15,850 lbs | 7,620 kg | 16,800 lbs |

| STANDARDS COMPLIANCE | CE EN280, PB-10-611-03 |
|----------------------|------------------------|
|----------------------|------------------------|

### RANGE OF MOTION Z™-45/25



### RANGE OF MOTION Z™-45/25J



\* The metric equivalent of working height adds 2 m to platform height. U.S. adds 6 ft to platform height.

\*\* In lift mode (platform raised), the machine is designed to operate on firm, level surfaces only.

\*\*\* Gradeability applies to driving on slopes. See operator's manual for details regarding slope ratings.

\*\*\*\* Weight will vary depending on options and/or country standards.

## Features

### EASILY CONFIGURED TO MEET YOUR NEEDS

#### PLATFORM OPTIONS

- Steel 1.83 m (6 ft) (standard)
- Steel 1.22 m or 1.52 m (4 ft or 5 ft)

#### JIB OPTIONS

- Non-jib
- Articulating 1.52 m (5 ft) jib boom

#### POWER

- 48 V DC (eight 6 V 350 Ah batteries)

#### BATTERY CHARGING OPTIONS

- 25 Amp 48 V onboard charger
- Onboard alternator powered by Kubota diesel 8.9 kW (12 hp) engine

#### DRIVE

- 2 x 4

#### TYRE OPTIONS

- Industrial foam-filled (standard)
- Industrial non-marking foam-filled

### STANDARD FEATURES

#### MEASUREMENTS

##### Z™-45/25

- 15.87 m (51 ft 6 in) working height
- 7.62 m (25 ft) horizontal reach
- 7.04 m (23 ft 1 in) up-and-over clearance
- Up to 227 kg (500 lb) lift capacity

##### Z™-45/25J

- 15.92 m (51 ft 8 in) working height
- 7.65 m (25 ft 1 in) horizontal reach
- 6.73 m (22 ft 1 in) up-and-over clearance
- Up to 227 kg (500 lb) lift capacity

#### PRODUCTIVITY

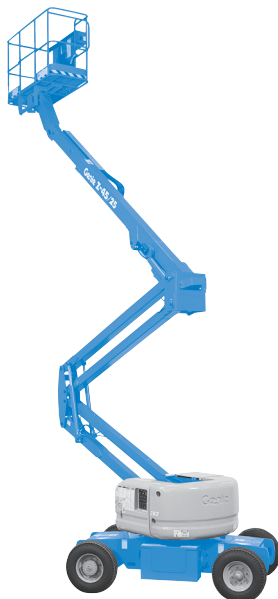
- Self-levelling platform
- Hydraulic platform rotation
- Fully proportional controls
- Thumb rocker steer
- Drive enable
- AC power to platform
- Horn
- Hour meter
- Tilt alarm
- 355° non-continuous turntable rotation
- Zero tailswing
- Certified load sensor

\* Reduces platform capacity to 200 kg (440 lbs)

### STANDARD FEATURES

#### POWER

- 48 V DC deep cycle battery pack
- 24 V DC auxiliary power
- Battery charge indicator - BCI (Bi-energy only)



### OPTIONS & ACCESSORIES

#### PRODUCTIVITY

- Platform swing gate
- Half-mesh platform inserts with swing gate
- Platform top auxiliary rail
- Air line to platform
- Fire resistant hydraulic oil
- Biodegradable hydraulic oil
- Standard aircraft protection package\*
- Deluxe aircraft protection package\*
- Tool tray
- Fluorescent tube caddy
- Pipe cradle (pair)
- Alarm package
- Platform works lights
- Lockable platform control box covers
- Tow package

#### POWER

- Battery charge indicator - BCI (DC only)
- Low voltage interrupt with BCI
- Cold Weather package (Bi-Energy only)

#### UK

Millennium House  
Brunel Drive  
Newark NG24 2DE  
UK  
Tel: +44 (0)1476 584333  
Fax: +44 (0)1476 584334

#### France

10, ZA de la Croix St. Mathieu  
28320 Gallardon  
France  
Tel: +33 (0)2 37 26 09 99  
Fax: +33 (0)2 37 26 09 98

#### Germany

Finienweg 3  
28832 Achim/Bremen  
Germany  
Tel: +49 (0)4202 8852-0  
Fax: +49 (0)4202 8852-25

#### Spain

Gaià 31, Pol. Ind. Plá d'en Coll  
08110 Montcada i Reixac  
Barcelona  
Spain  
Tel: +34 93 572 50 90  
Fax: +34 93 572 50 91

#### Scandinavia

Importgatan 17  
422 46 Hisings Backa  
Sweden  
Tel: +46 31 57 51 00  
Fax: +46 31 57 90 20

#### Middle East

Terex Middle East  
PO Box 282325, Dubai  
U.A.E.  
Tel: +971 4 339 1800  
Fax: +971 4 339 1802  
Email: InfoME@terex.com

#### Genie United States

18340 NE 76th Street  
P.O. Box 97030  
Redmond, WA  
USA 98073-9730  
Tel: +1 425 881-1800  
Fax: +1 425 883-3475

**Email:** AWP-InfoEurope@terex.com

#### Distributed By: